



Vault door RVD Grade VI

The door can be cast or delivered to a prefabricated vault where for example: weapons, explosives, medicines, jewelry, watches and other valuable are stored. Robur's Grade VI door is also used in museums and for archivists.



The vault door is primed finish as standard.



Standard equipped with two changeable key locks. Electronic combination locks on special order.

On special order, the door can be equipped with special regulations for emergency opening (inside or outside). An emergency opening lock per mounted lock.



Provided as standard with alarm cabling between the door and its frame through one of the hinges. One door stop holder is delivered with the door as standard. The door is prepared for a grille gate as standard.



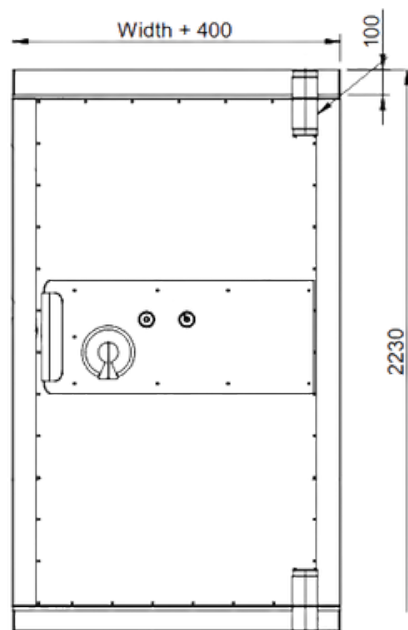
Fire protected according to EI90.



Burglary protection certified by ECB•S according to the European standard EN 1143-1.

WEIGHT AND MEASUREMENTS

	RVD Grade VI
Standard clear opening measure H * W mm	2000 * 900
Max. clear opening dimensions for certified door	2400 * 1400
Max. clear opening dimensions for uncertified door	3200 * 2100
Frame	The frame is designed for 350 mm wall thickness.
Weight kg	1150



HANGING OF DOOR AND GATE:

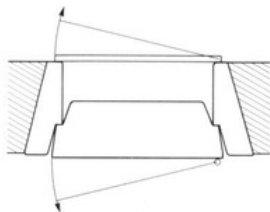


fig. 1. Door - right hung
Gate - left hung

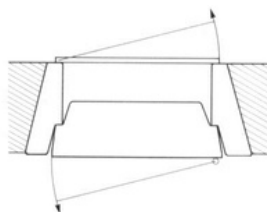


fig. 2. Door - right hung
Gate - right hung

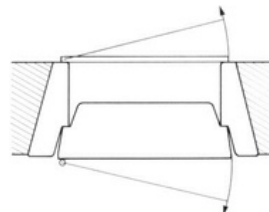


fig. 3. Door - left hung
Gate - right hung

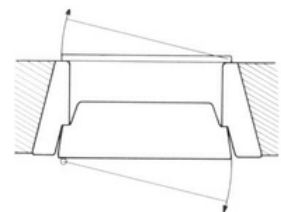


fig. 4. Door - left hung
Gate - left hung

We reserve the right to alter the specification without prior notice.



Head office:
Robur Safe AB
Lundbyvägen 8
311 68, Slöinge
Sweden

+ 46 346 260 260
info@robursafe.com
www.robursafe.com