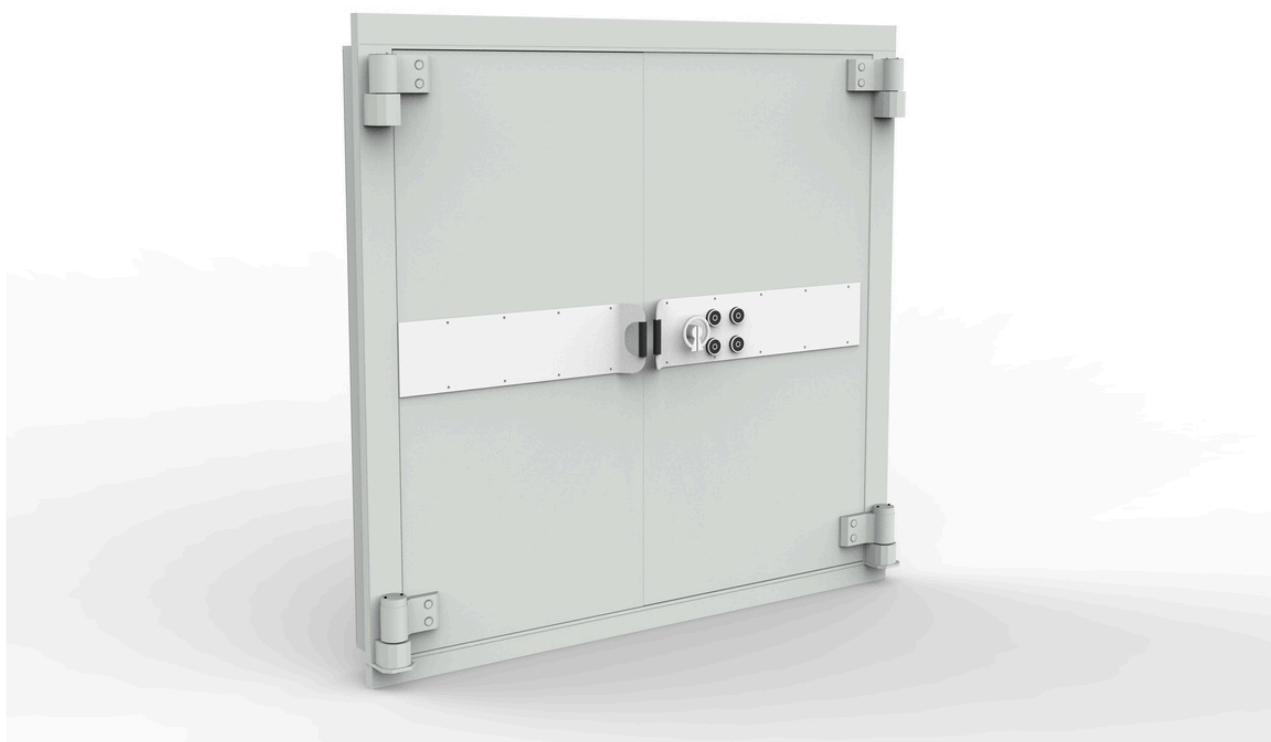




## Double door RVD Grade VI

The door can be cast or delivered to a prefabricated vault where for example: weapons, explosives, medicines, jewelry, watches and other valuable are stored. Robur's Grade VI double door is also used in museums and for archivists.



The vault door is primed finish as standard in RAL7035.



Standard equipped with two changeable key locks. Electronic combination locks on special order.

On special order, the door can be equipped with special regulations for emergency opening (inside or outside). An emergency opening lock per mounted lock.



Provided as standard with alarm cabling between the door and its frame through one of the hinges. One door stop holder is delivered with the door as standard.

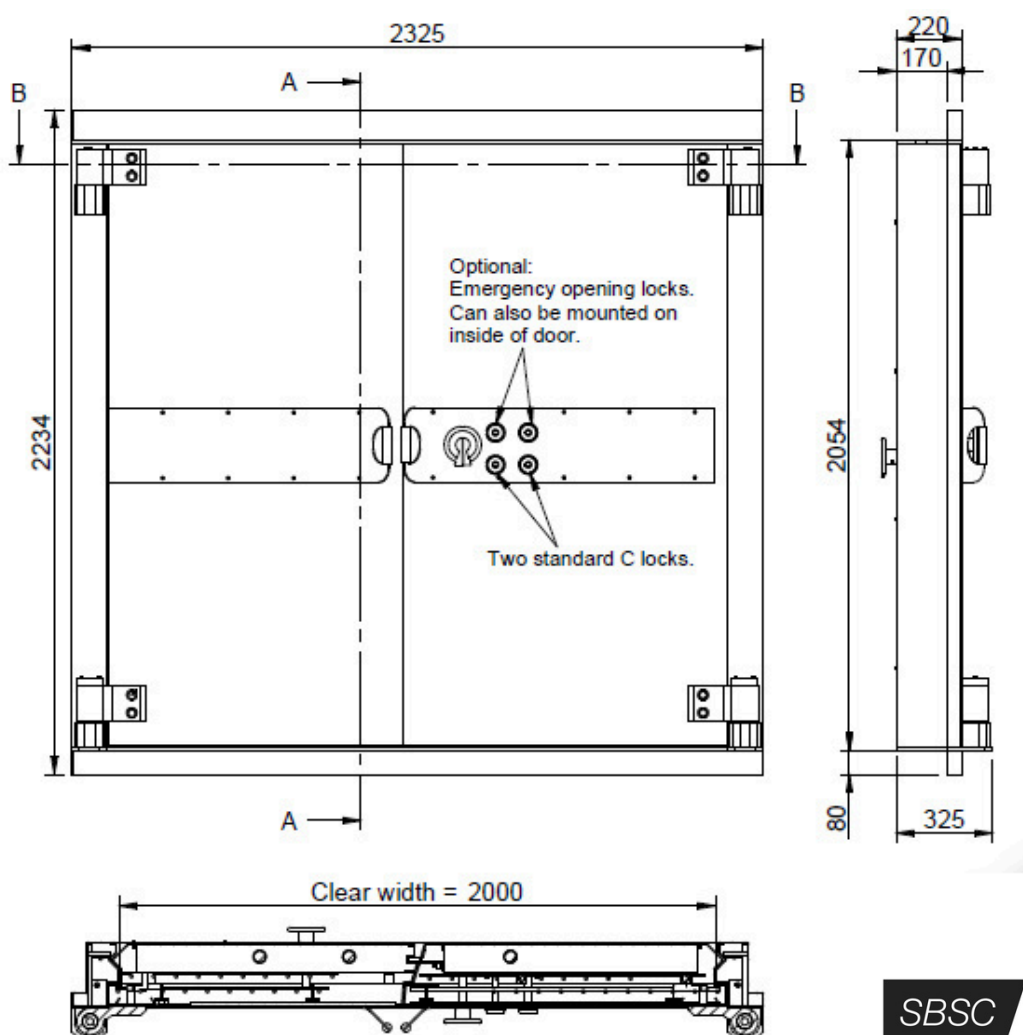
The door is prepared for a grille gate as standard.



Burglary protection certified by SBSC according to the European standard EN 1143-1.

## WEIGHT AND MEASUREMENTS

	RVD Grade VI
<b>Standard clear opening measure</b> H x W mm	2 000 x 2 000
<b>Max. clear opening dimensions for certified door</b> H x W mm	3 400 x 3 200
<b>Max. clear opening dimensions for uncertified door</b> H x W mm	3 400 x 3 400
<b>Frame</b>	The frame is designed for 350 mm wall thickness
<b>Weight</b> (Standard clear opening 2 000 x 2 000) kg	2 670



We reserve the right to alter the specification without prior notice.



**Head office:**  
Robur Safe AB  
Lundbyvägen 8  
SE-311 68, Slöinge, Sweden

☎ +46 346 260 260  
✉ [info@robursafe.com](mailto:info@robursafe.com)  
🌐 [www.robursafe.com](http://www.robursafe.com)