



Strongroom door RVD

Grade VIII EX CD

Vault and Strongroom doors are essential where a higher level of security is required for storing cash, valuables and controlled drugs.

Our range of doors are designed to suit security requirements from Grade I to Grade XI EX-CD.

Each door features a frame that can be integrated into a concrete wall, adapted for a Prefabricated Strongroom, or equipped with a Grip Frame.

Additionally, Robur Safe offers emergency doors from Grade III to Grade XI EX-CD.



Primed finish.



As standard the Strongroom door Grade VIII EX CD is provided with two changeable key locks.

On special order:

- Electronic combination lock and/or one extra lock.
- Emergency opening from inside.



As standard the Strongroom door Grade VIII EX CD is provided with:

- Alarm cabling between door and frame through one of the hinges.
- One door stop holder is delivered with the door.
- Two magnetic switches to indicate open door.



Burglary protection certified by SBSC according to the European standard EN 1143-1.

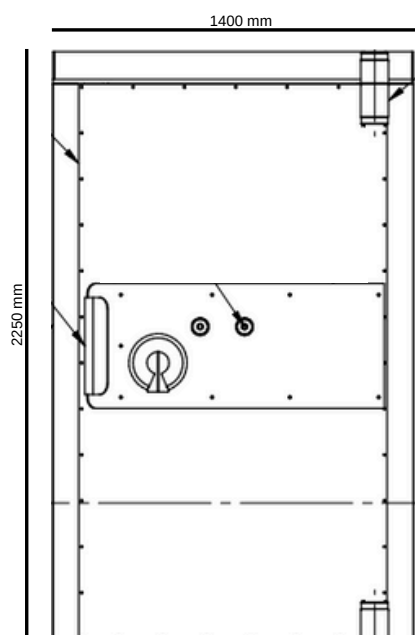
Fire protected according to EI90.

Blast tested according to the European standard EN 1143-1.

Diamond drills tested according to the European standard EN 1143-1.

PRODUCT SPECIFICATIONS

	RVD Grade VIII EX CD
Standard clear opening measure H * W mm	2000 * 900
Max. clear opening dimensions for certified door	2400 * 1400
Max. clear opening dimensions for uncertified door	3200 * 2100
Frame	The frame is designed for 350 mm wall thickness.
Weight kg	1800



HANGING OF DOOR AND GATE:

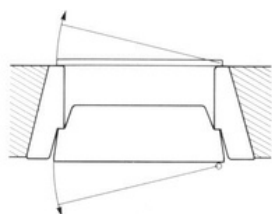


fig. 1. Door - right hung
Gate - left hung

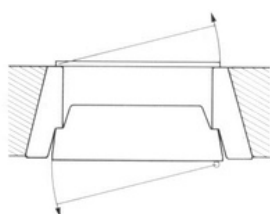


fig. 2. Door - right hung
Gate - right hung

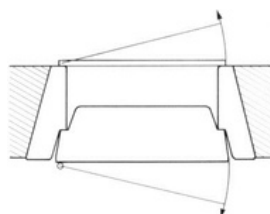


fig. 3. Door - left hung
Gate - right hung

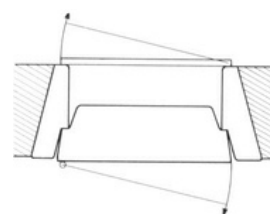


fig. 4. Door - left hung
Gate - left hung

We reserve the right to alter the specification without prior notice.



Head office:
Robur Safe AB
Lundbyvägen 8
311 68, Slöinge
Sweden

☎ + 46 346 260 260
✉ info@robursafe.com
🌐 www.robursafe.com